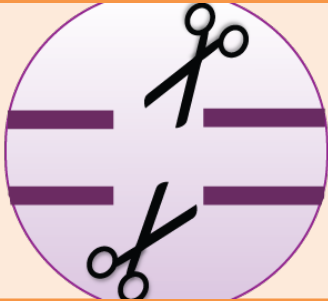


Knockout (KO) Cell Lysates

CRISPR-Engineered KO Cell Lysate for Antibody Specificity Testing

What is KO Lysates?

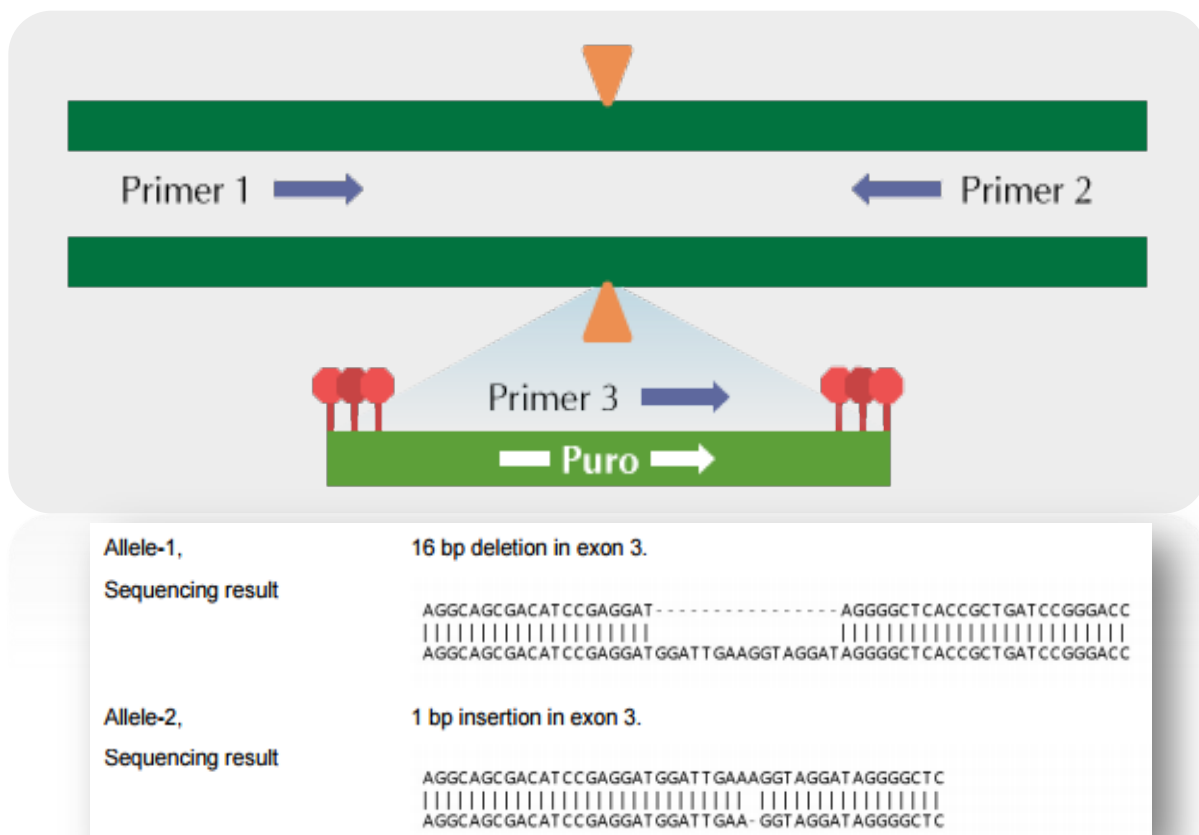


Cell lines with both alleles of a specific gene are knocked out by CRISPR. The resulted cell are called KO cell and its homogenate is called KO cell Lysate.

Why Use KO Lysates?

- Most of the antibodies on the market have questionable specificity
- When paired with the parental cell lysates, the KO lysates are perfect tools to validated the specificity of antibodies via Western Blot

How to are KO Cell Validated? By PCR and sequencing?

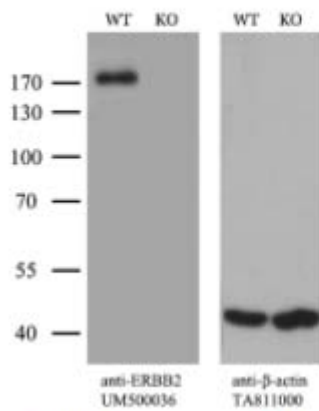


Each KO cell line carries mutation at both alleles of the target locus. The validation was conducted at genomic level via PCR and sequencing using PCR primers strategically designed around the target site (P1 and P2), or on the inserted fragment (P3).

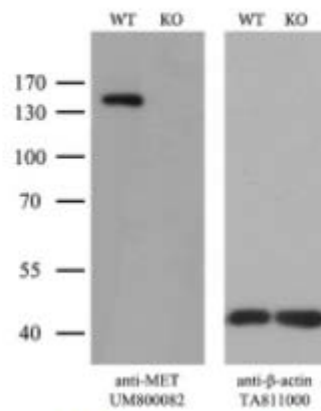
www.origene.com/products/proteins/knockout-lysates

KO-Validated Antibodies

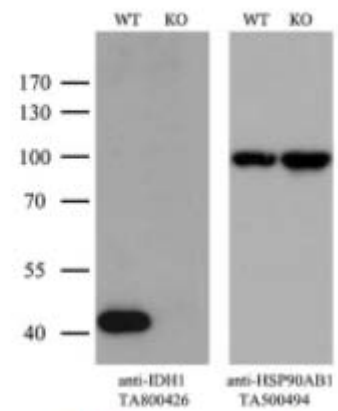
Featured knockout (KO) validated antibodies



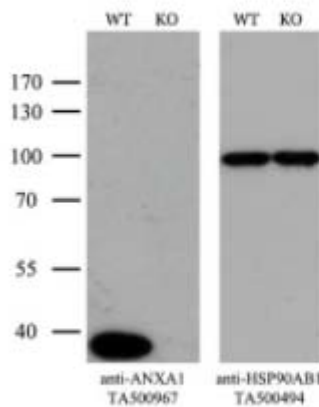
HER2 mouse mAb



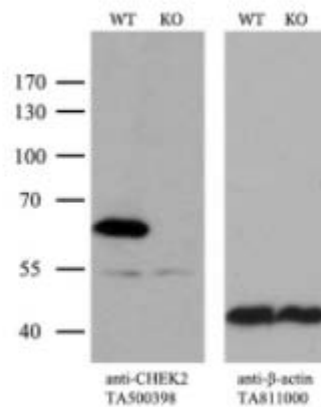
MET mouse mAb



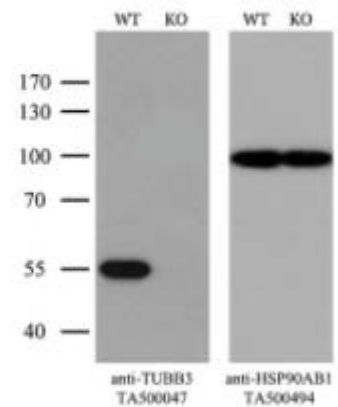
IDH1 mouse mAb



ANXA1 mouse mAb



CHEK2 mouse mAb



TUBB3 mouse mAb

For more KO validated antibodies, please visit
www.origene.com/products/antibodies/primary-antibodies/ko-validated-antibodies